

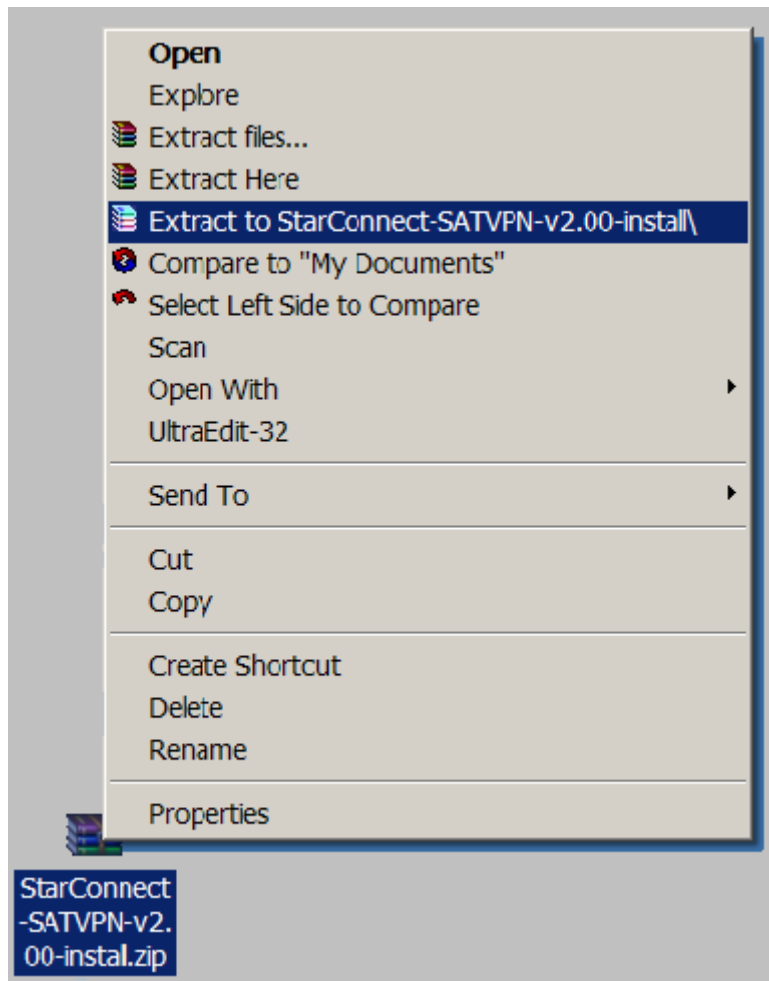
# StarConnect Software Installation Manual

# Part 1: Installation of Software

\*Before starting the installation procedure please note that uninstallation of your current Main Data(SatDirect Plus) software is unnecessary and we recommend that you do not attempt this on your own. An uninstallation option will be available at during a later version.

\*There is no need to repoint or adjust your satellite dish – this is a software download only at this time.

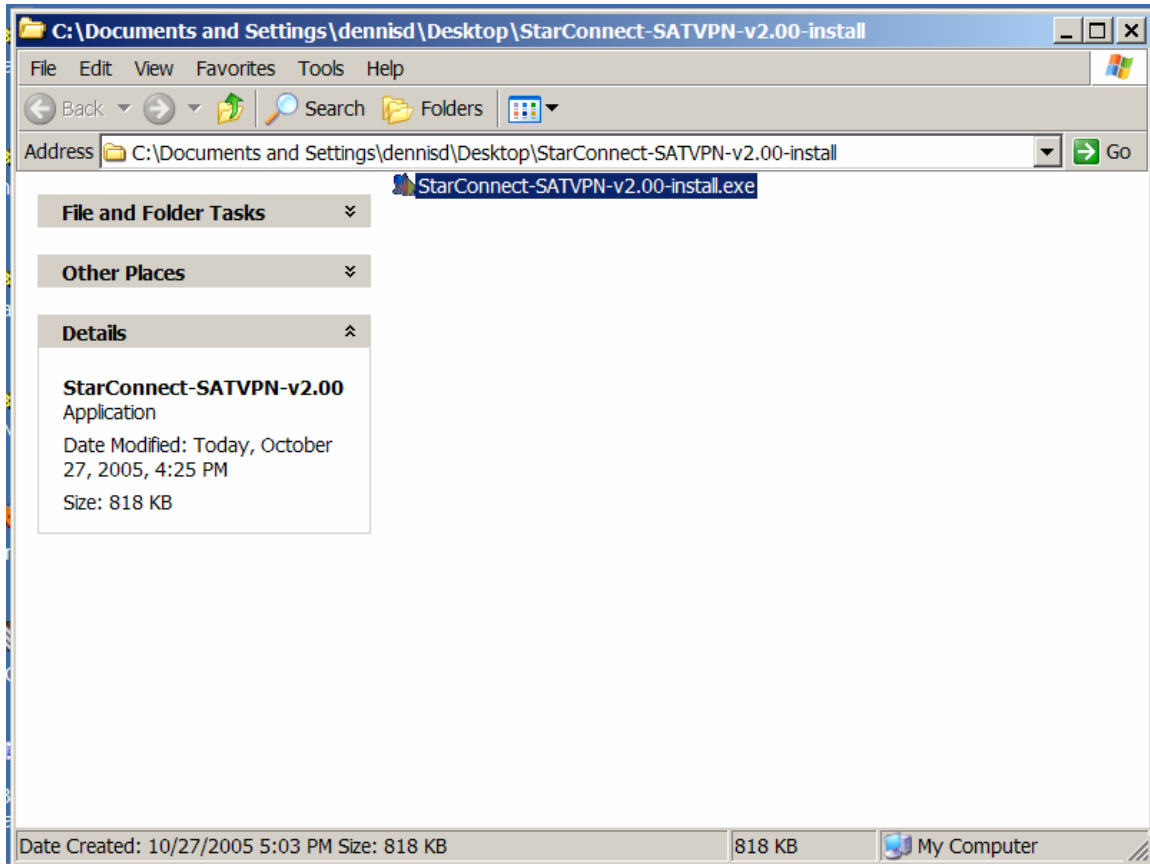
1. Go to Satnow.net and under software downloads and download the StarConnect software download to your desktop.
2. There will be an option once you right click on the downloaded file to either unzip or extract the file. Please select one of these options.



3. You will then see a folder which will say **StarConnect-SATVPN-v2.00-install**. See screenshot.

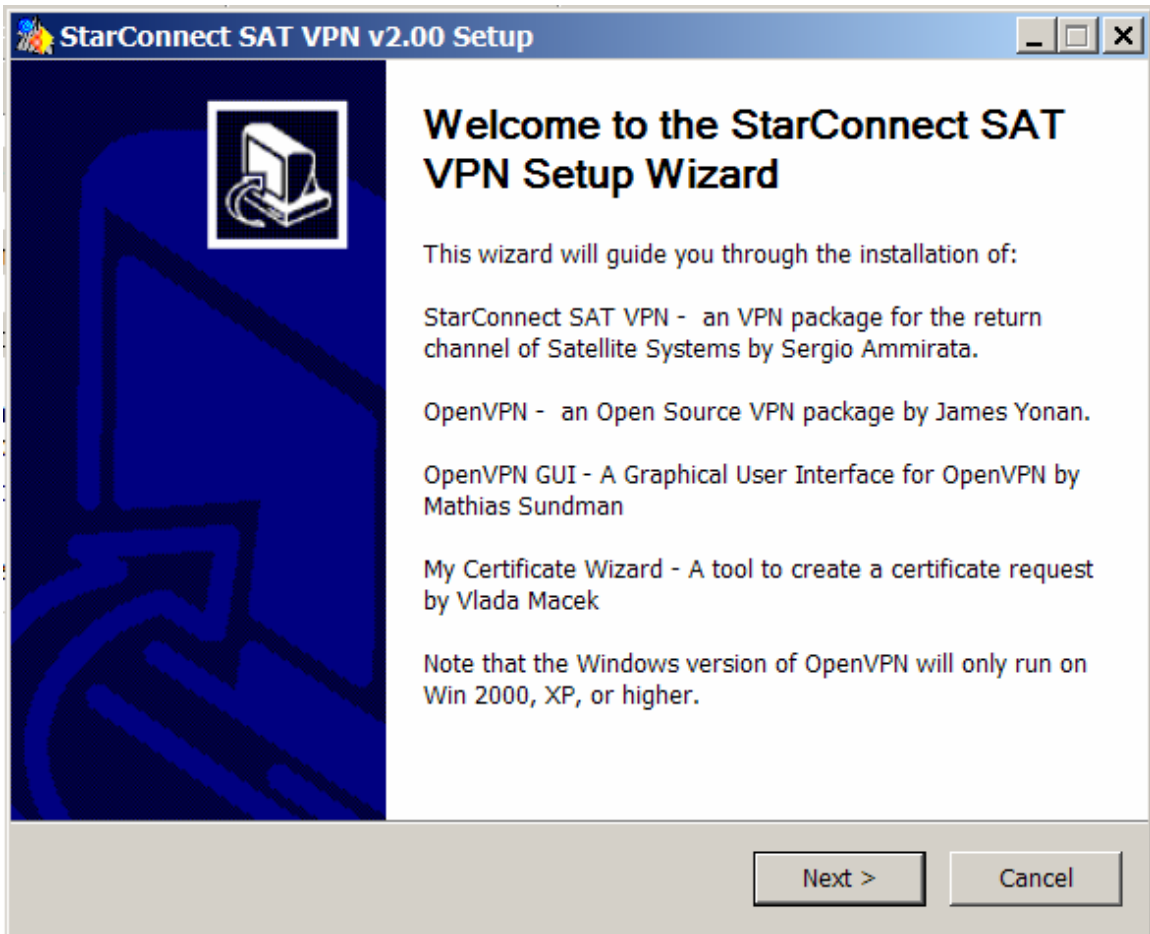


4. Double click on the folder. The following window should appear.

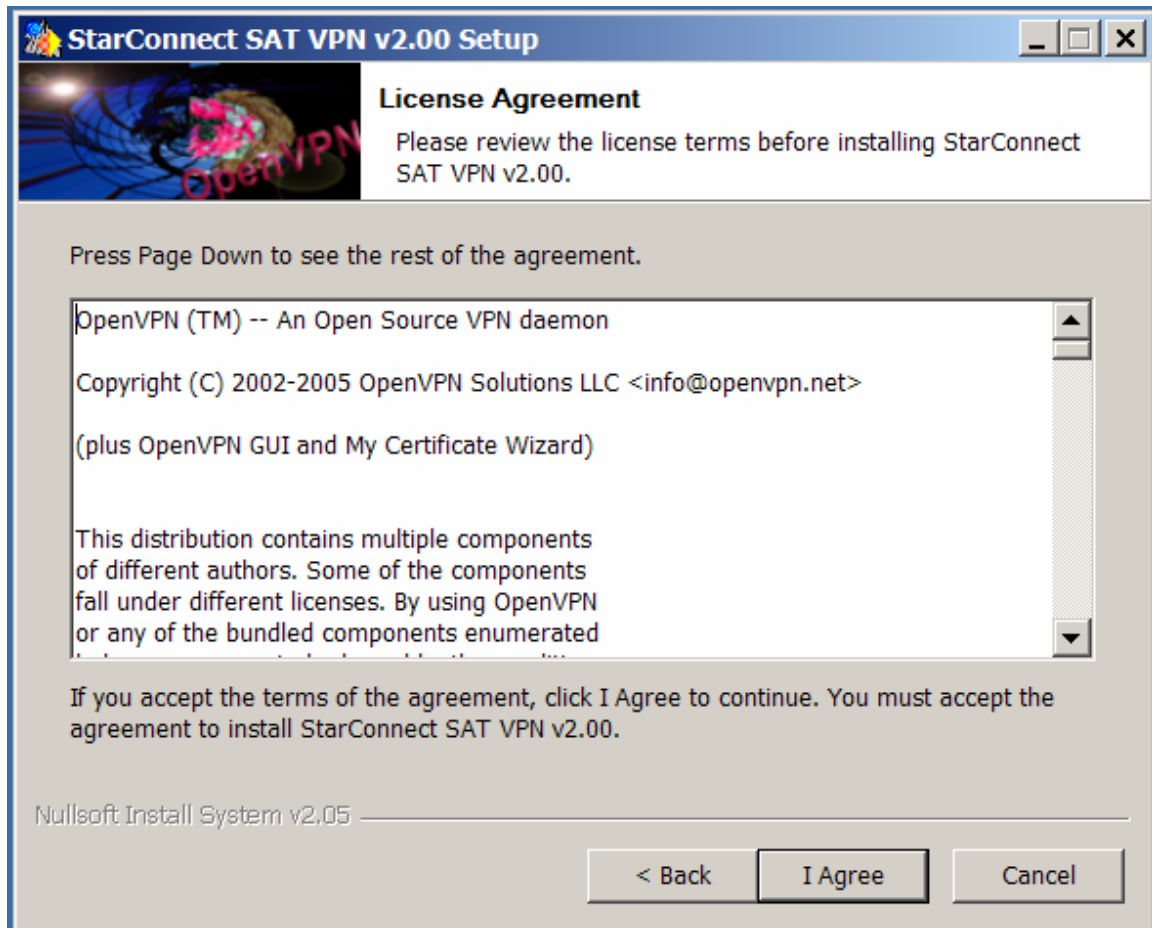


5. Double click on the **StarConnect-SATVPN-v2.00-install.exe** program.

6. The setup for the program should start and a welcome screen should appear as pictured below.

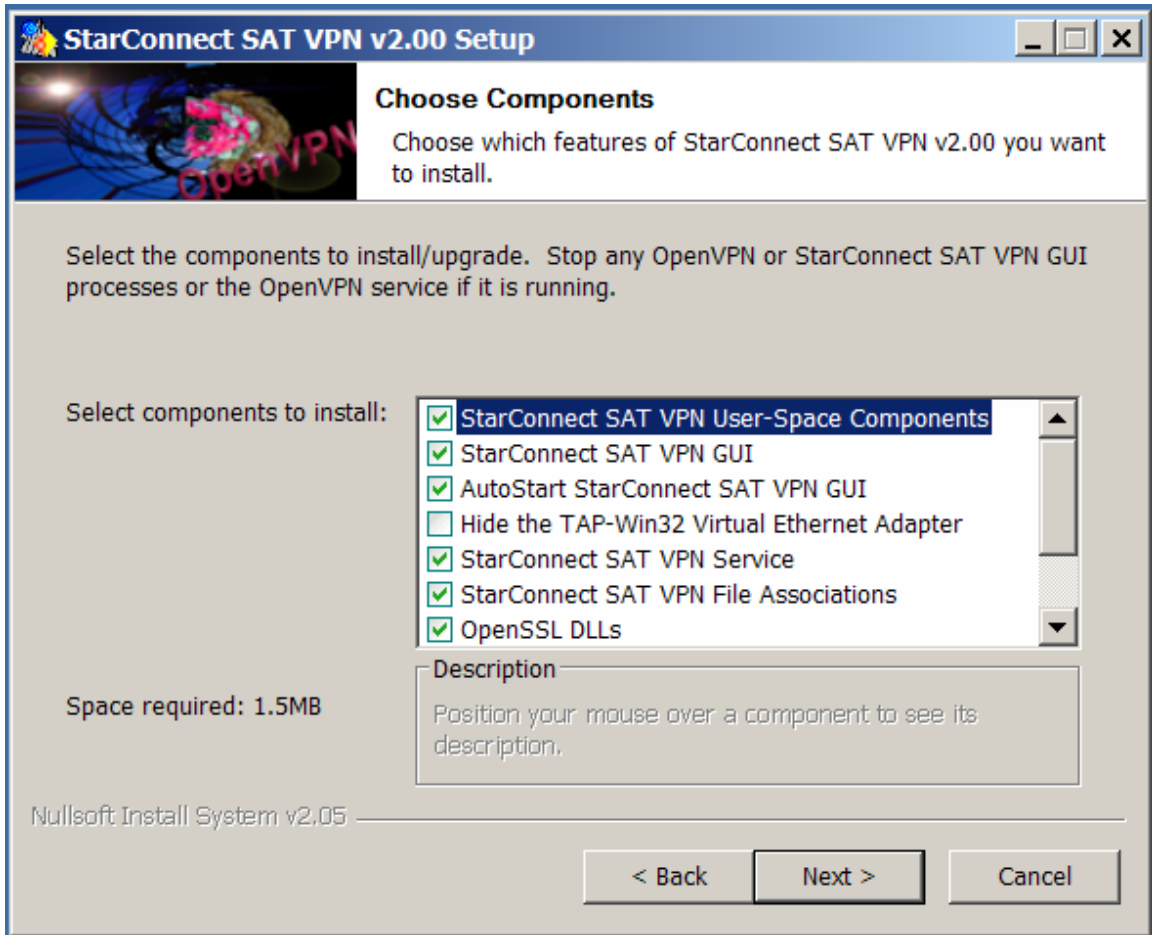


7. Click next. You will then see the **License Agreement** as pictured below.

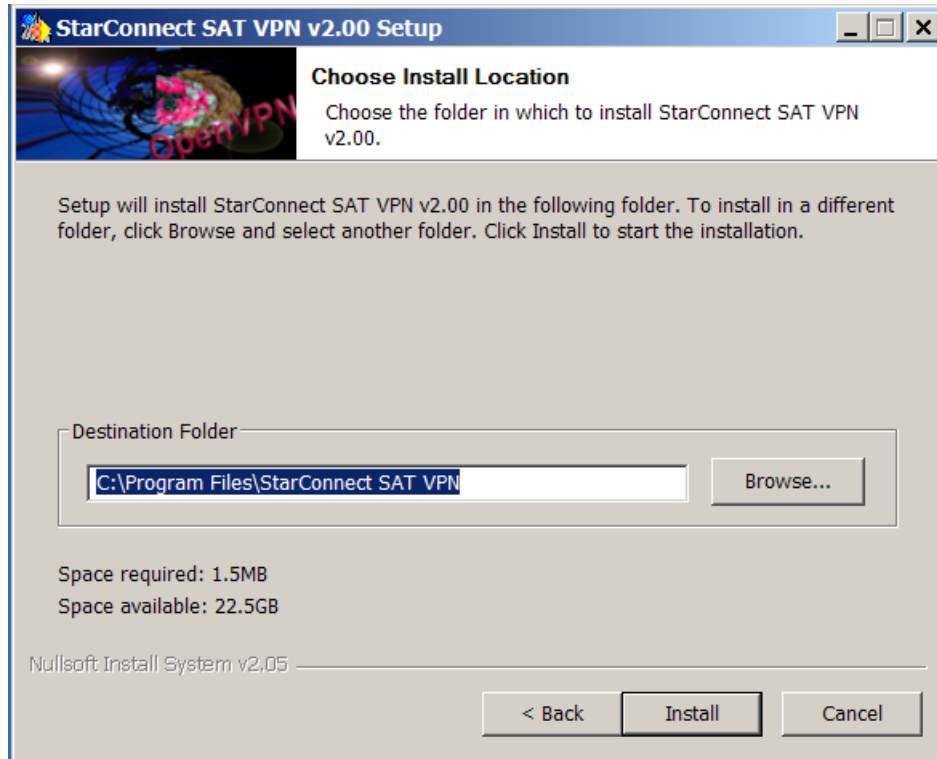


8. Click on **I Agree**.

9. The next screen should be **Choose Components** as pictured below. Keep default settings and click **Next**.



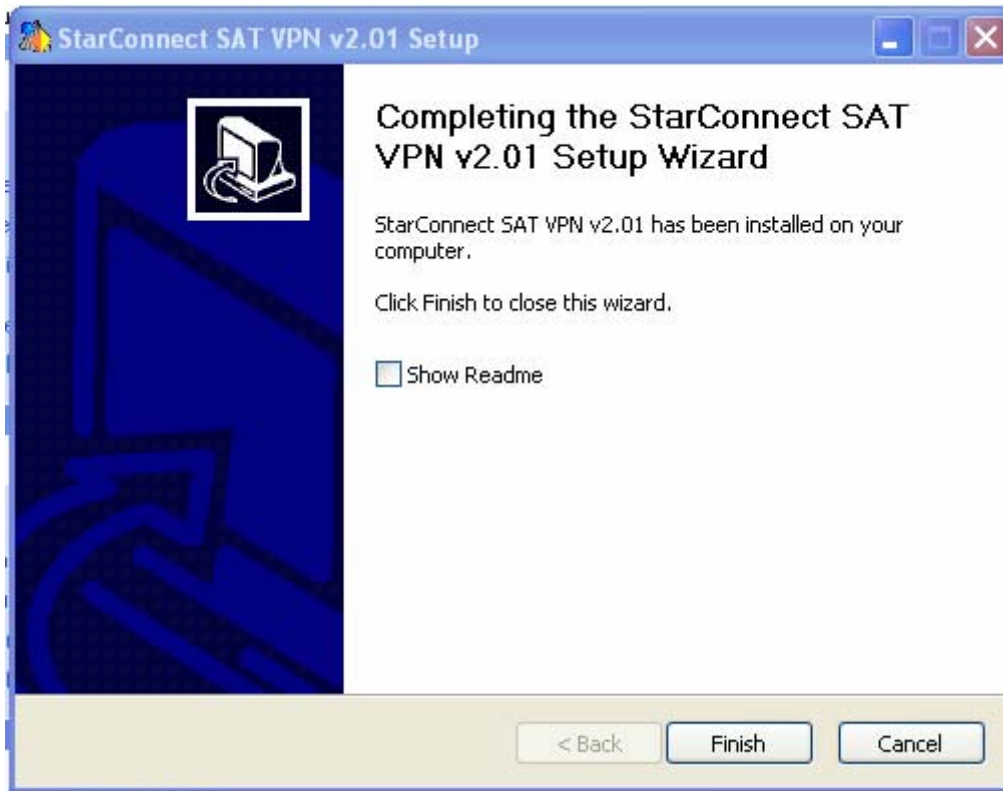
10. The **Choose Installation** Screen should appear as pictured below.



11. Click on **Install** and it will start installing components onto computer.
12. During the installation process a **Hardware Installation** window will appear as shown below.



13. Click on **Continue Anyway**.
14. The installation process should finish. Please click **Next**.
15. A final screen should appear shown below **Completing the StarConnect SAT VPN 2.01 Setup Wizard**.



16. Click **Finish**. This will finish the installation process.
17. Once finished reboot your computer.

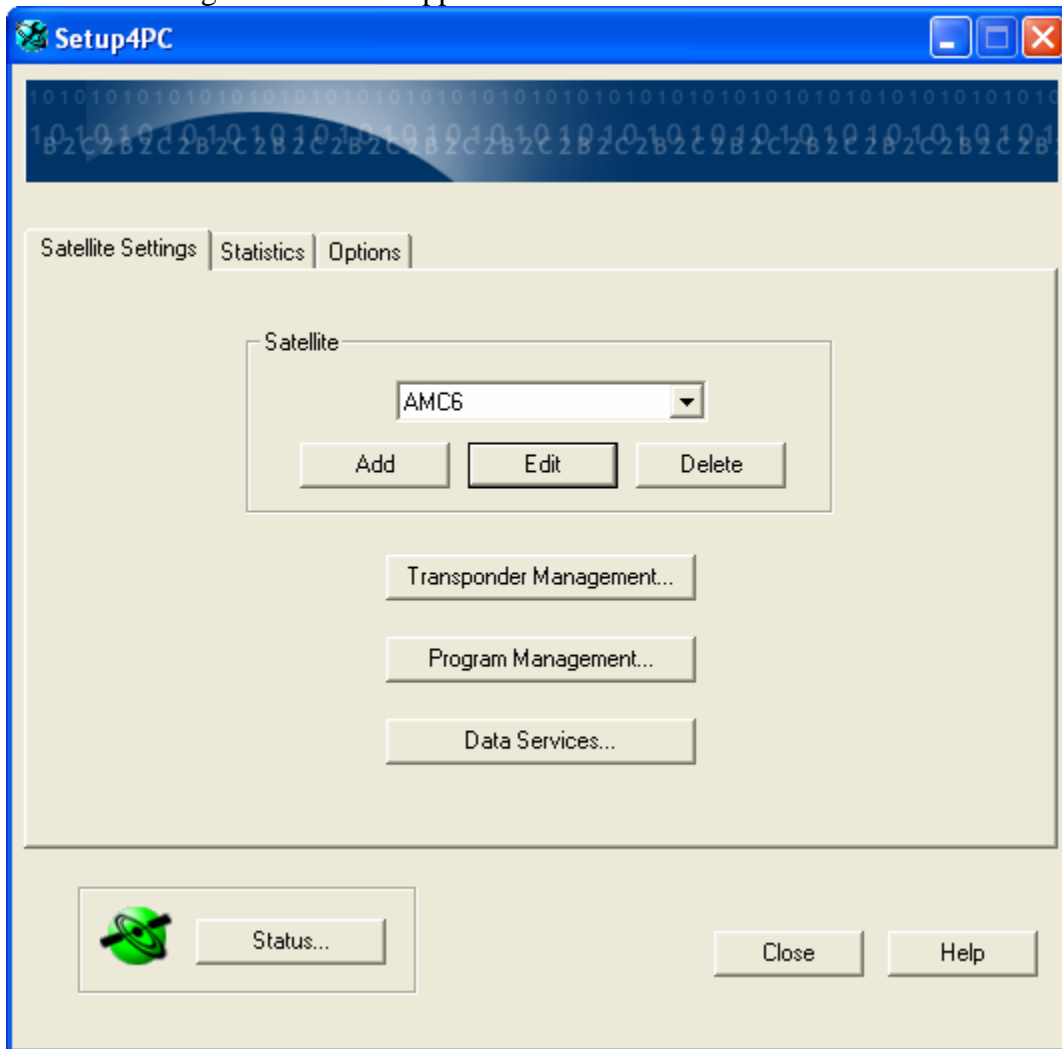
## Part 2: Configuring Software

1. Once completing the installation of the software if you are able connect via Dial Up you will want to look up your IP address in Satman. If you not able to look it up please call your ISP to obtain your IP address.
2. Once you have obtained the IP address double click on the green B2C2 Broadband Icon as shown below.

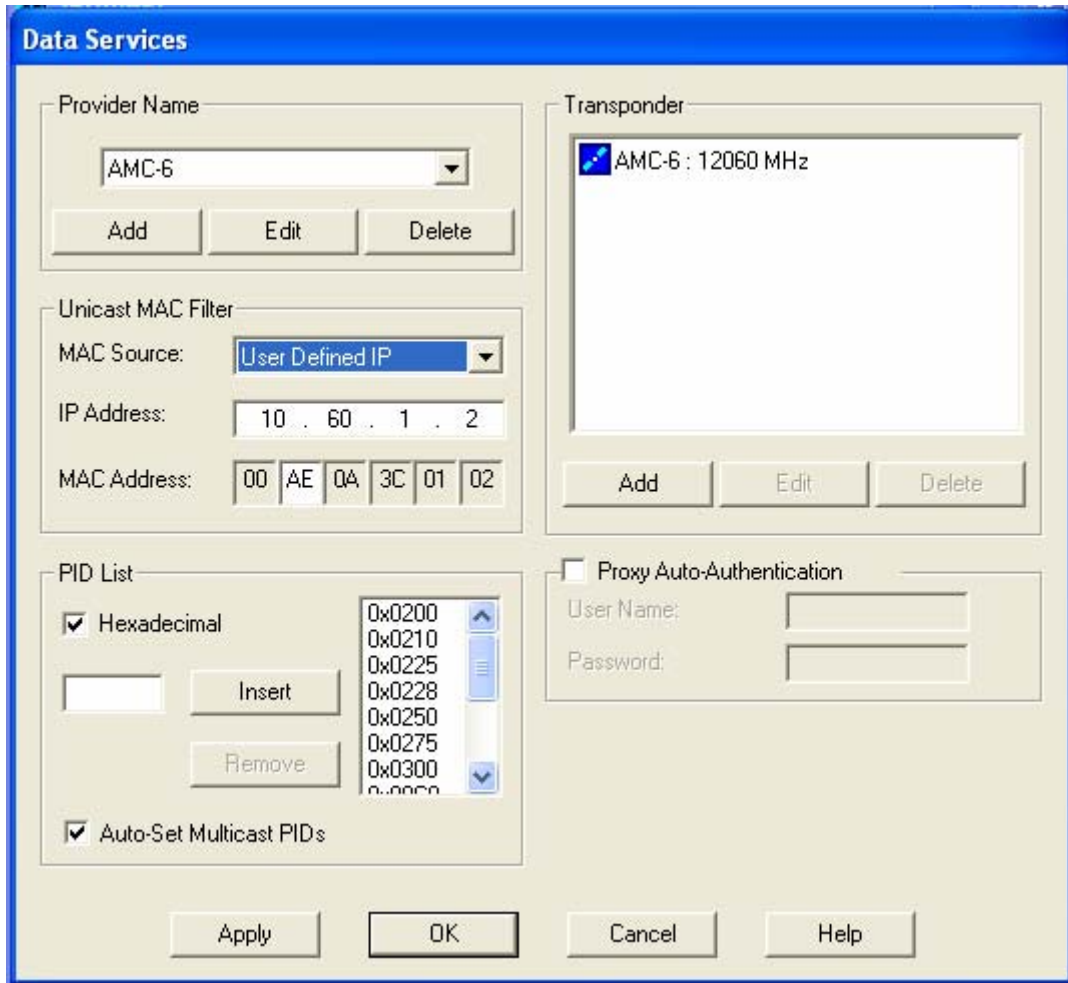
### B2C2 Taskbar Satellite Icon



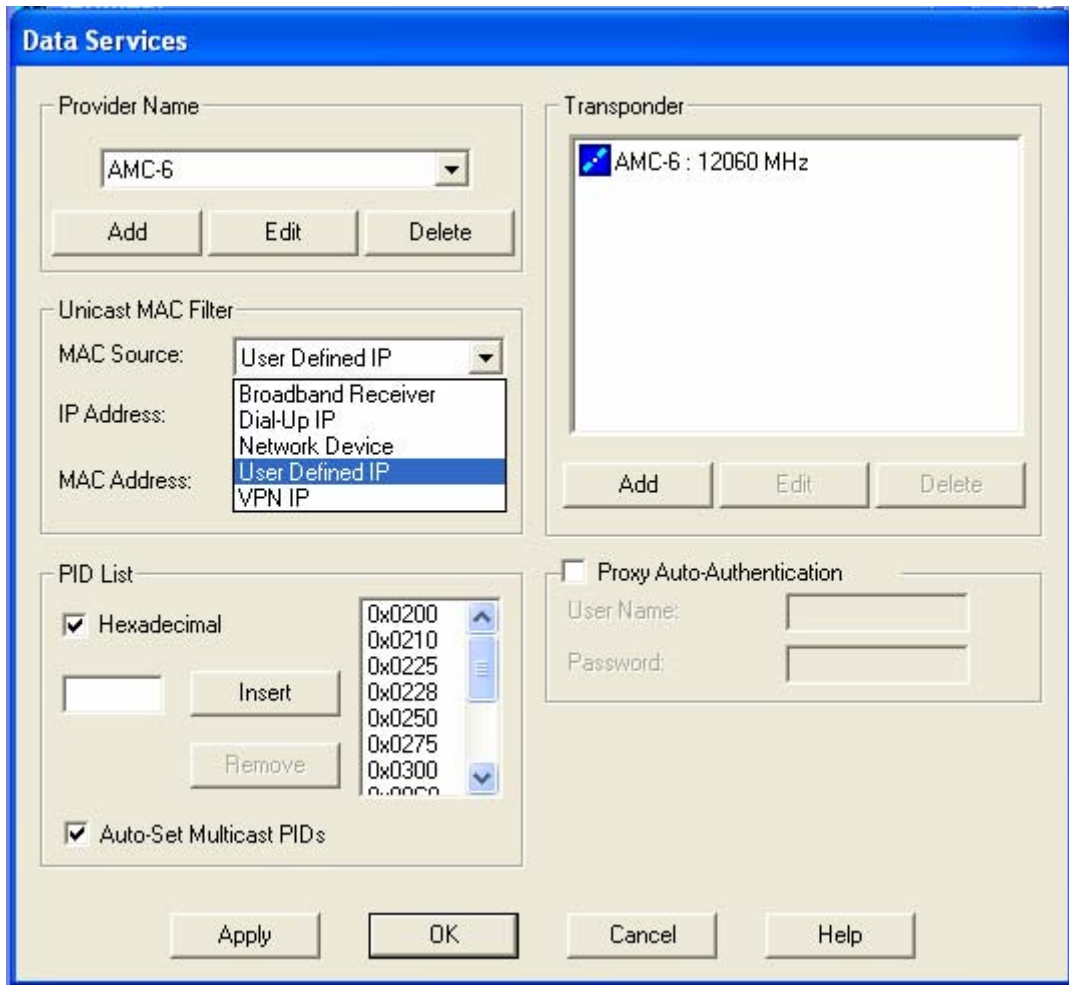
3. The following screen should appear:



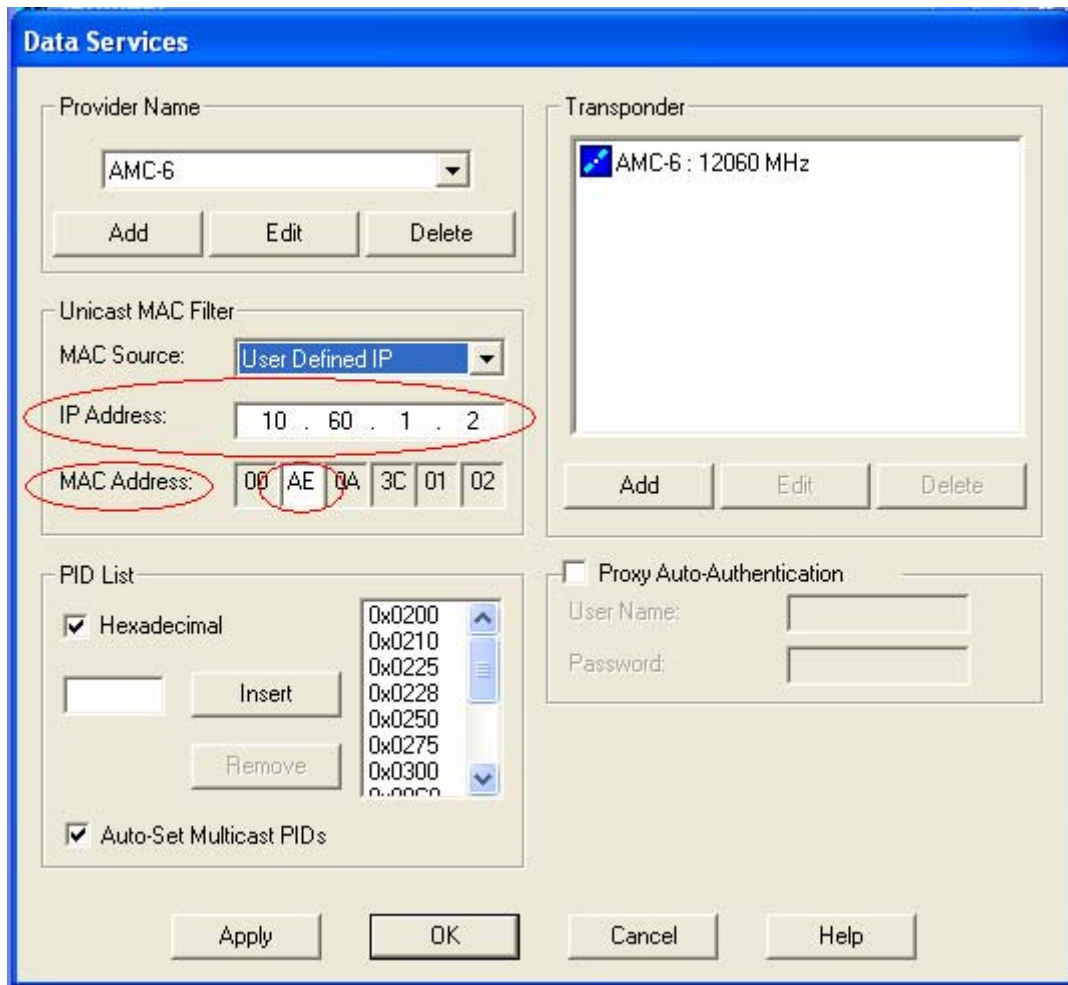
4. Click on the **Data Services** button.
5. The following screen should appear.



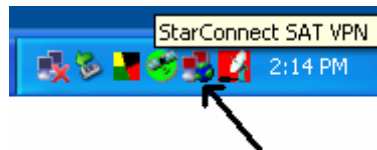
6. Click on the drop down box next to **MAC Source** and make sure **User Defined IP** is highlighted. As shown below.



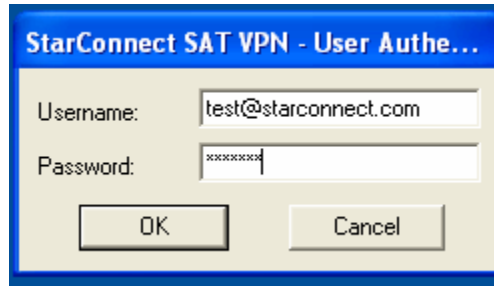
7. Once you select **User Defined IP**. You will then need to enter in the IP addressed which you obtained in the **IP Address** field.
8. You will then want to make sure the **MAC Address** field has **AE** in the second box as show below.



9. Then click **OK**.
10. Once you have finished this process you will then be able to connect to the internet via satellite.
11. You will notice in the Taskbar in your bottom right hand corner of your Desktop there is a new icon which looks like two red computers connected together as show below.



12. This is your **StarConnect SAT VPN** icon.
13. You will want to first make sure you connected your dial up.
14. You will then want to double click on the **StarConnect SAT VPN** icon and the following login window will appear.



15. You will need to enter your **username@yourdomainname** and then your **password** to login.
16. At this time the **StarConnect SAT VPN** should turn green as shown below.



17. At this time you should be able to surf the internet and download via satellite.