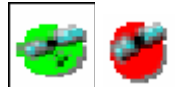


**Effective as of Monday, November 27, 2006 at 6:30 a.m.
Transponder Change**

1. When making changes to the settings in the B2C2 or Broadband software you must first locate your B2C2 or Broadband satellite icon in your taskbar which could be either green or red.



B2C2 or Broadband Setup4PC Satellite Icon
Figure 1.1

2. Double click on the satellite signal icon.
3. The following screen should appear:

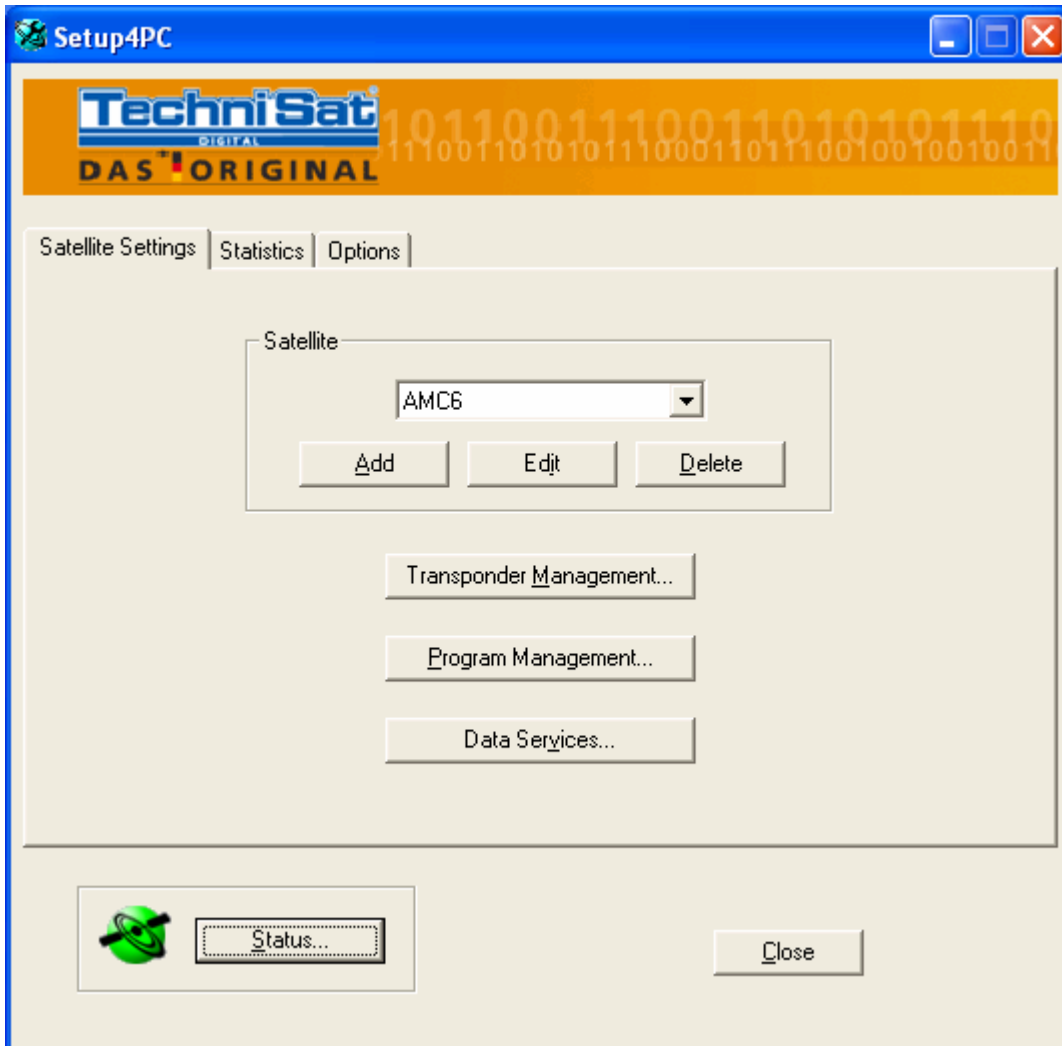


Figure 1.2

4. Click on the **Transponder Management** button.
5. The **Transponder Management** window should appear as shown in **Figure 1.3** below:

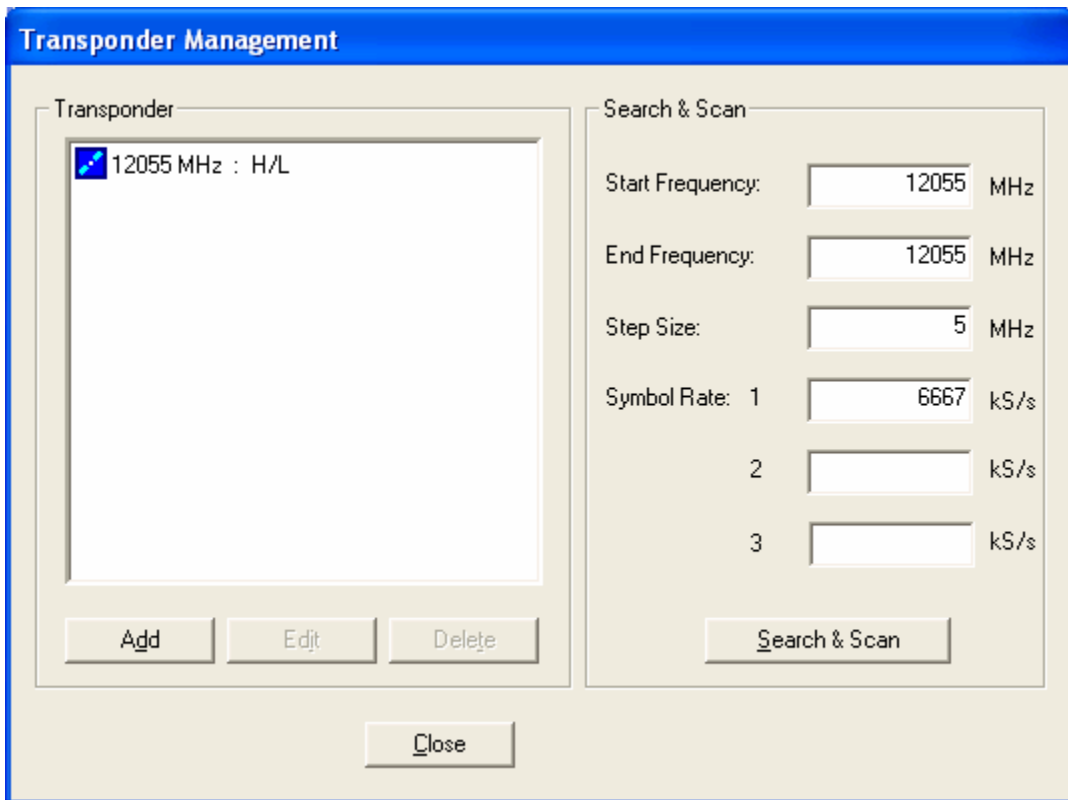


Figure 1.3

6. Select **12055 MHz : H/L** in the **Transponder** box.
7. Click on the **Edit** button.
8. The **Edit Transponder** window should appear as shown in **Figure 1.4** below:

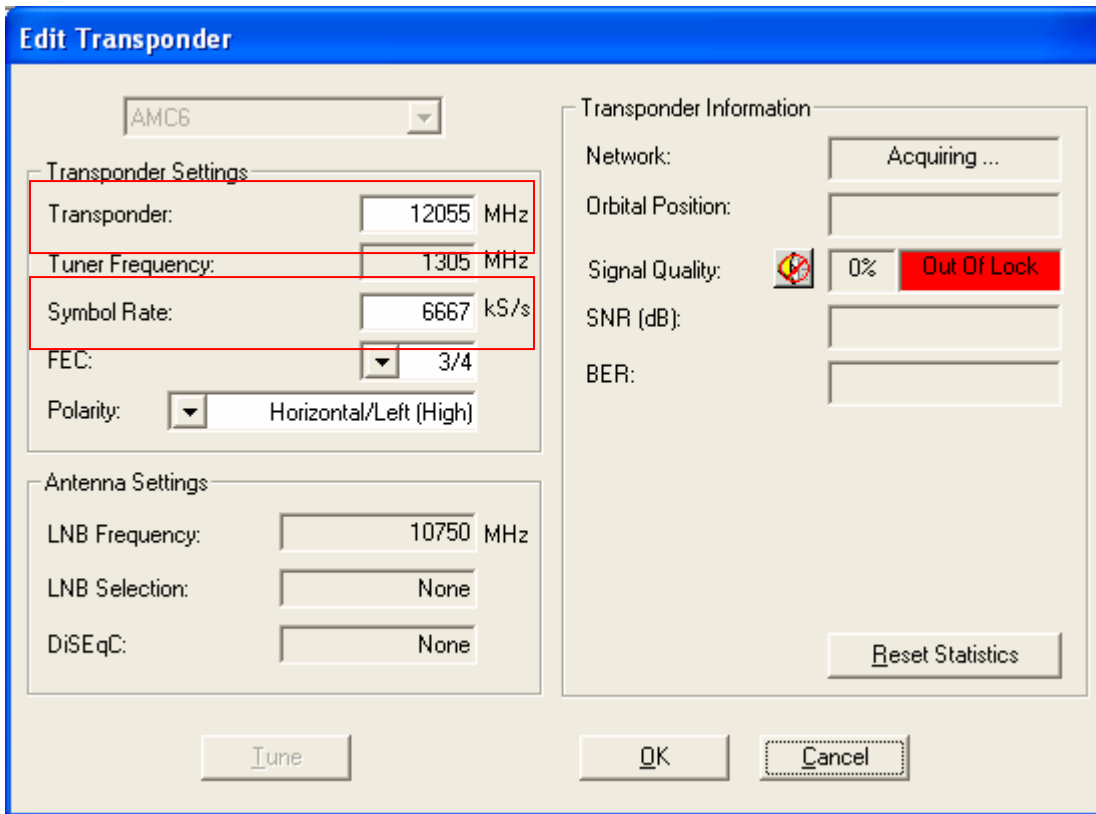


Figure 1.4

9. The only changes will be made to **Transponder** in the **Transponder Settings**.
10. The default setting for the **Transponder** is set to **12055** and **Symbol Rate** is set to **6667**, as shown in **Figure 1.4** above.
11. You will need to change the **Transponder** to **11726** and **Symbol Rate** to **8000**, as shown in **Figure 1.5** below:

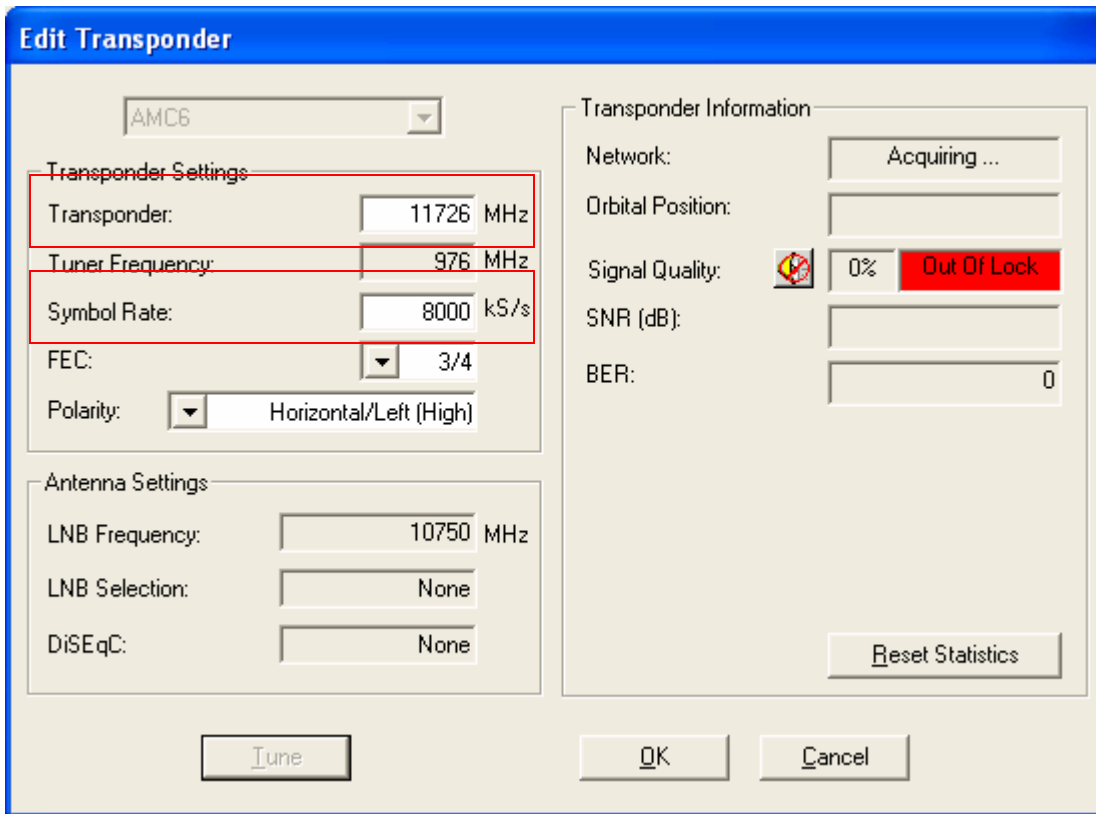


Figure 1.5

12. Once these changes are made, click on **Tune** and the Signal Quality indicator should turn green.
13. Click on **OK**.
14. Close all windows
15. The last step is applying the changes to the Windows Icon Tray, for that, right click on the Satellite icon, and go to AMC6 :: STARCONNECT and press left click on that

